

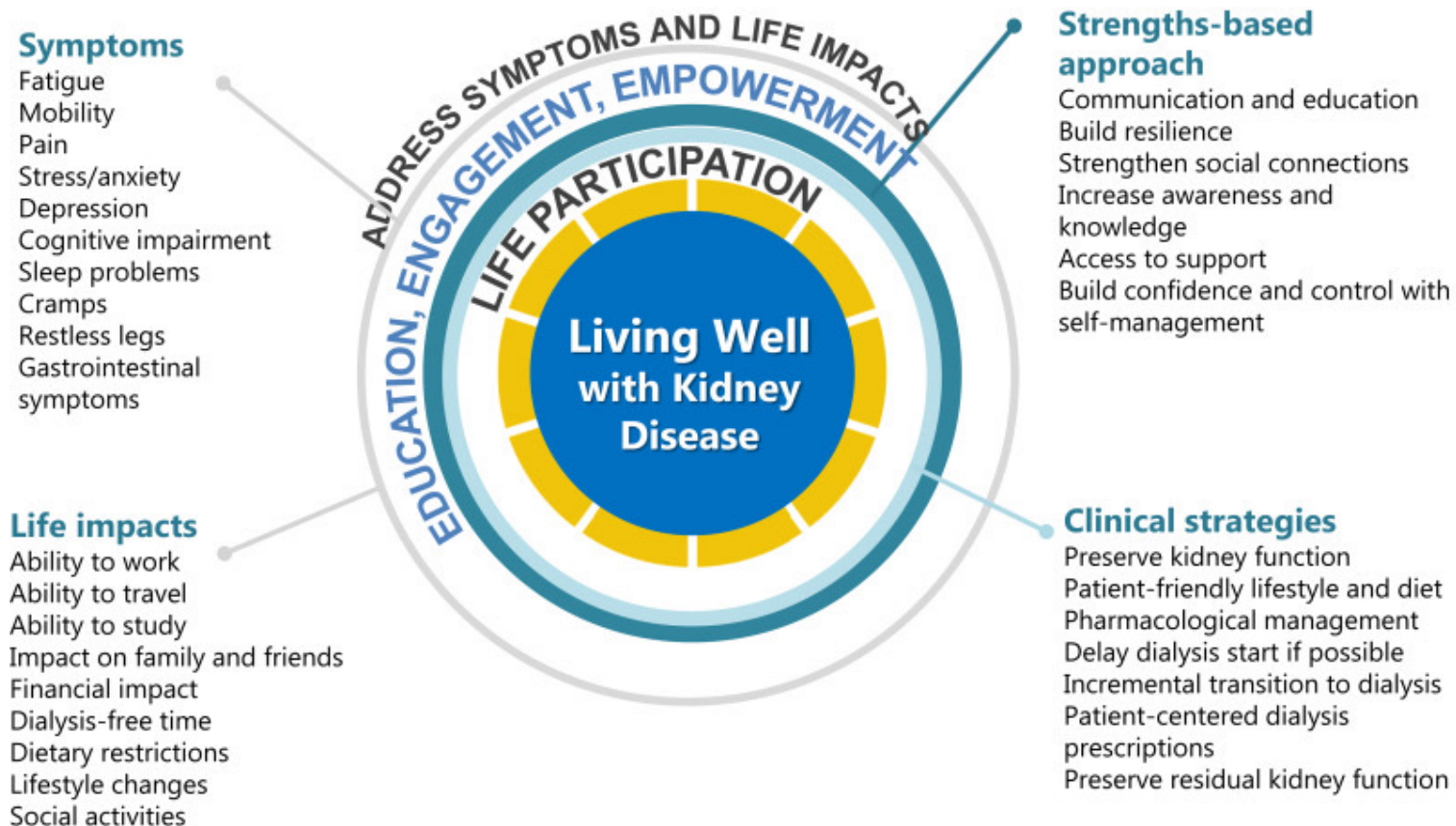
Holiday dialysis: Getting closer to patients

Prof. Loreto Gesualdo,
University of Bari
Prof. Francesco Pesce,
University of Bari



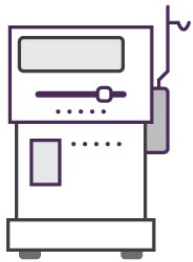
Rome, 2022

Living Well With Kidney Disease by Patient and Care Partner Empowerment: Kidney Health for Everyone Everywhere



Beyond technical empowerment: moving to Patient-Centered Self-Management

Levels of "Empowered Independent Dialysis"



Beginner

- Show machine
- Wash hands and dialysis access
- Pre- and post-treatment vital signs and weight, data entry
- Dialyzer, needles, and supplies required for treatment

Intermediate

- Building machine – stringing lines and priming
- Machine testing – pHoenix meters, connection, transducers, Hansens
- Labs – heparin

Advanced

- Prepare arm of CVC (cleaning/cath care)
- Cannulation or CVC access, treatment initiation
- Monitor treatment
- Post-treatment return, pull needles, bandaging, data entry
- Discard used supplies, clean machine and chair post-treatment

Source: Richard Gibney, MD

NEJM Catalyst (catalyst.nejm.org) © Massachusetts Medical Society

6. Integrated PCSM model, incorporating Integrated care, Health Literacy, and IT.

5. Accurately Address Patient Obstacles and Implement Targeted SM Skills.

3. Identify patient barriers with Lin's (2013) instrument on assessing self-management behaviors

4. PCSM Intervention (Patient Autonomy & Empowerment)

2. Barriers in illness management resulting in unsuccessful treatment outcomes

1. Traditional Paradigm (Patients' Compliance /HP-centered)

Int. J. Environ. Res. Public Health 2020, 17(24), 9443

Getting closer to patients: what we have done so far

OUR ANSWER IS...



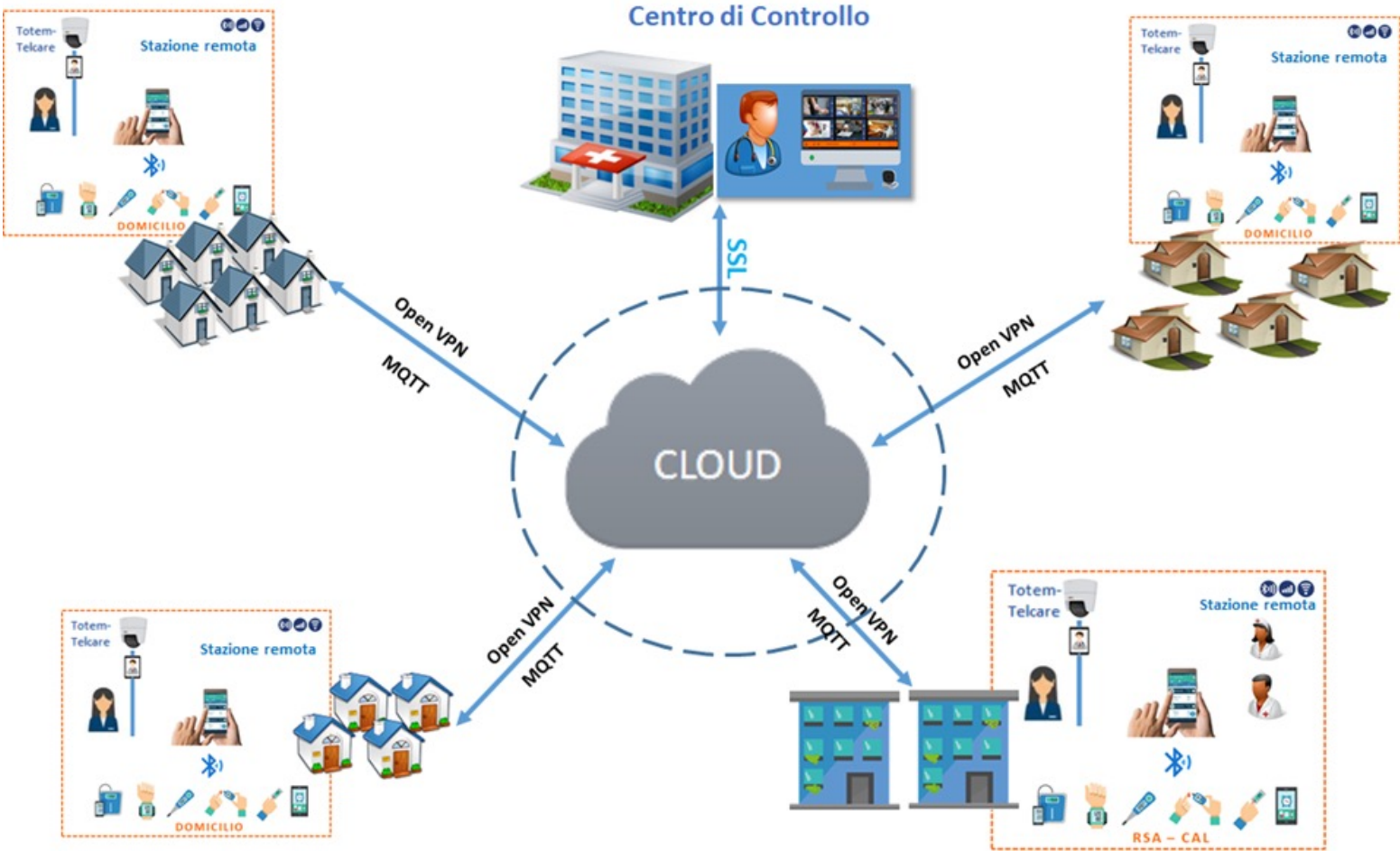
- UBICARE
(POR Puglia FESR 2007-2013)
- SMARTHEALTH 2.0
(PON Rec 2007-2013 "Smart Cities and Communities")
- DIADOM
(Cluster Tecnologici Puglia)
- OPLON
(Smart Cities and Communities Nazionale)
- CCM 2011
(Progetto Regione Puglia)
- DIAMONDS
(Progetto Regione Puglia)
- PRISMA
(PON Rec 2007-2013 "Smart Cities and Communities")
- HELP LARGE
(Living Labs Smart Puglia 2020)
- PRECIOUS
(Cluster Tecnologici Puglia)
- PERSON
(Cluster Tecnologici Puglia)



USER PROFILES

Sharing of **knowledge and expertise** among **patients, doctors and nurses.**

Getting closer to patients: what we have done so far





Getting closer to patients: what we have done so far



Getting closer to patients: what we have done so far



Getting closer to patients: why our patient was so happy?



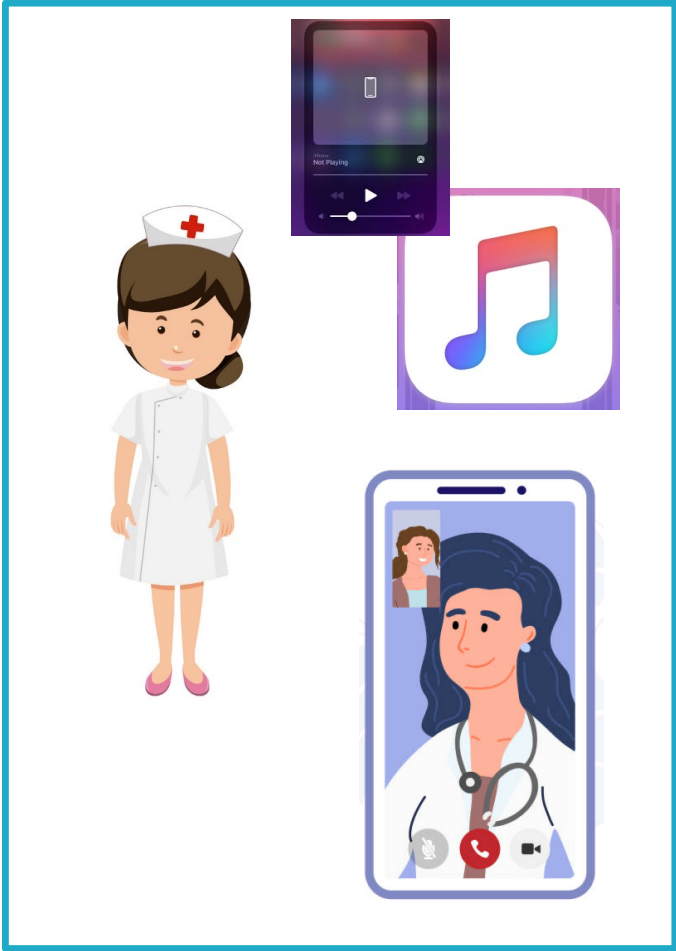
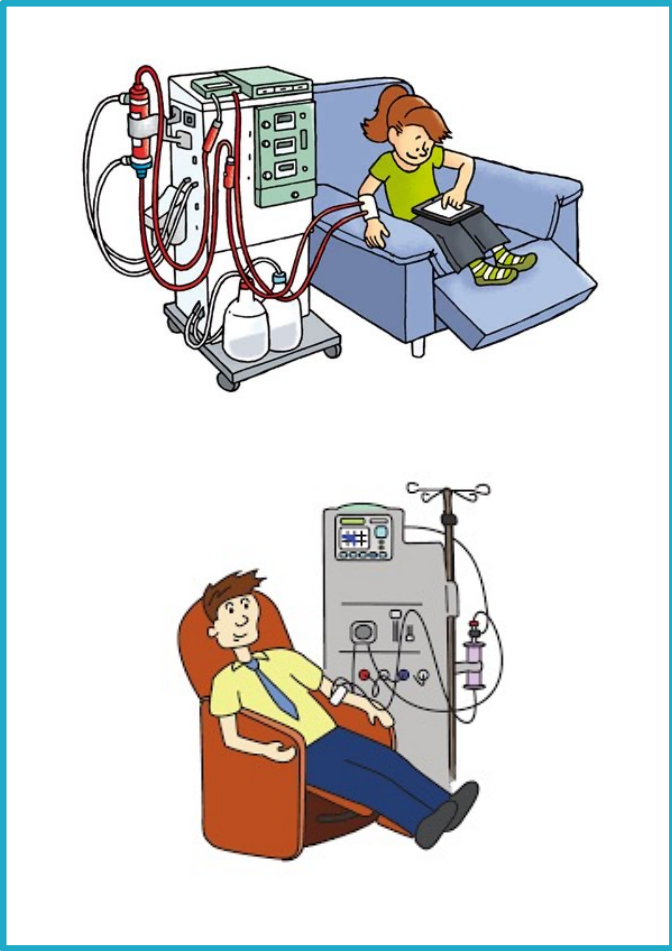
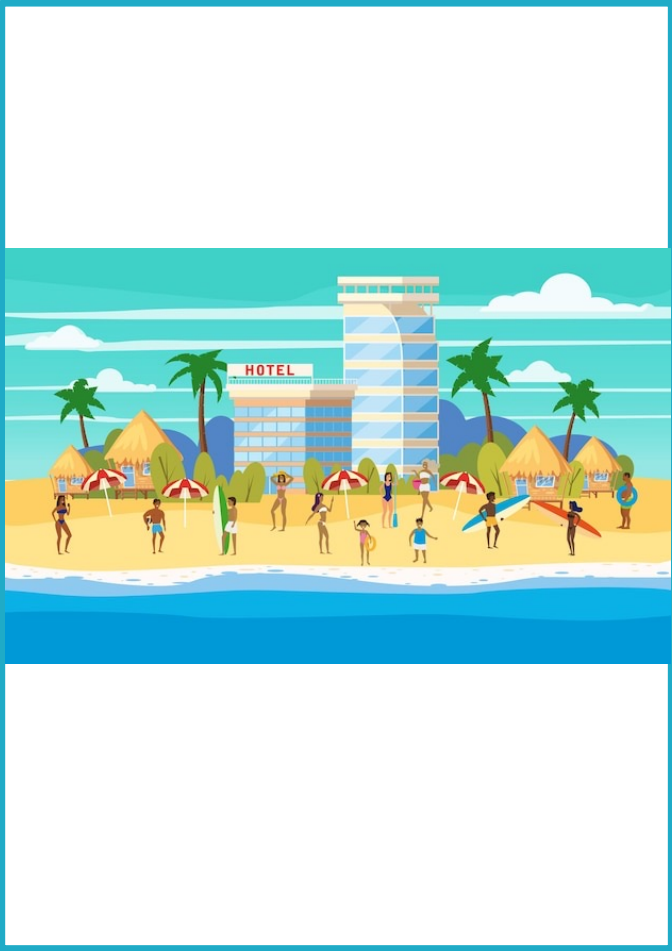
PILOT PROJECT: Holiday Dialysis



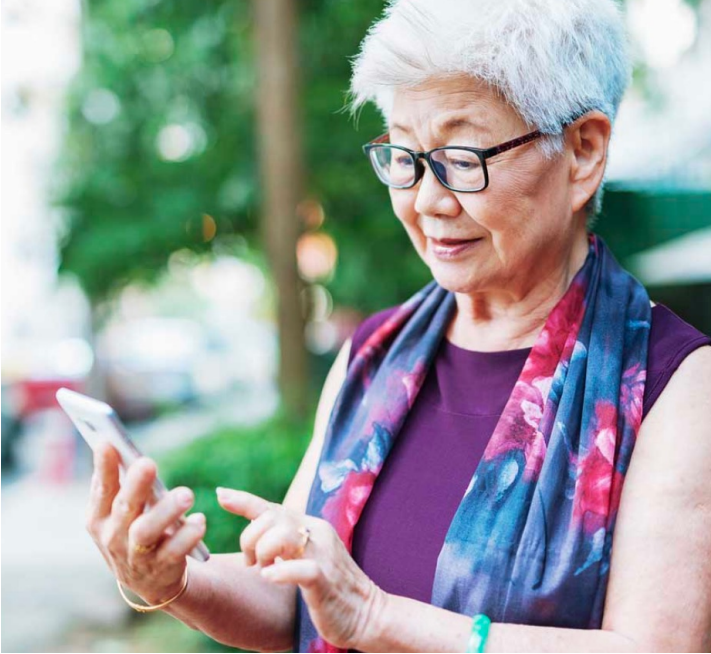
UNIVERSITÀ
DEGLI STUDI DI BARI
ALDO MORO



Getting closer to patients: what do we want to do next ?



Getting closer to patients: what do we want to do next ?





Starting from June, booking at Hotel Resort "Le Sirene" Gallipoli will be available

Reach out to Diaverum Italy for additional info



Hotel Resort "Le Sirene" Gallipoli

- Fully equipped separate room (with view on the beach)
- No transportation needed (to-and-fro dialysis centers)
- Enjoy more free time on vacation with your family
- Trained nurse on-site
- State-of-the-art telemedicine devices for remote consultations
- Agreement with emergency department of the closest hub hospital

Agreement with Hub public Institutions



"Vito Fazzi" Hospital

Piazza Filippo Muratore,
1, 73100 Lecce LE



Director:

Dr Marcello Napoli



loreto.gesualdo@uniba.it



francesco.pesce@uniba.it



**UNIVERSITÀ
DEGLI STUDI DI BARI
ALDO MORO**